

Corona

Host Management Console

IT solutions are often comprised of a number of software and hardware components that need to be administered, monitored and managed effectively to deliver the required service. Bluestar's Corona is a management console able to deal with a huge number of configurable monitors and alerts.

Corona is delivered with a number of specific extensions for the Corvus hardware and software environment that allow support staff to monitor and maintain the status of the environment. For example, host nodes can be placed 'off-line' for scheduled maintenance without effecting users or the load balancing 'weighting' of a particular node can be adjusted if required.

The status of the complete environment is graphically illustrated using images and colour coding. Further details of alerts, performance and underlying components can be accessed by clicking on the relevant icons. Corona can also be integrated with email, pagers or SMS for 24 hour and remote monitoring.

Monitors can include available space, performance, application availability, RDBMS specific events, dependent components, network links and data synchronisation. Within each category there are a large number of pre-defined alerts which can be complemented by customer specific monitoring as required.

Product Highlights:

- At-a-glance network and host status overview
- Monitor hundreds of host processes and activities
- Manage and control host nodes
- Browser deployment
- User security and administration
- System activity and performance charts

Alert Category Display

| Name | Priority |
|----------|----------|
| Warning | 20 |
| Severe | 40 |
| Critical | 100 |

Group Display - Listing

Bluestar

- Development Servers
 - South Site Development Servers
 - Development Machine (boldv1 (192.168.1.190)) OK
 - Development Machine (boldv2 (200.248.2.89)) OK
- HO Machines
 - All Servers and Workstations at HQ
 - Workstations
 - Fred's PC (boldv1 (0.0.0.0)) OK
 - Joe's PC (boldv1 (0.0.0.0)) Annual Leave
 - David's PC (boldv2 (0.0.0.0)) OK
 - Emma's PC (boldv1 (0.0.0.0)) OK
 - Web Server (boldv1 (192.168.2.235)) OK
 - Firewall (boldv1 (192.168.1.50)) OK

Node Display

Monitor status changed to: [Enable] successfully!

Development Machine (boldv2)

| Friendly Name | Development Machine |
|---------------|---------------------|
| IP Address | 192.168.1.89 |
| Description | Core Linux server |
| Status | OK |

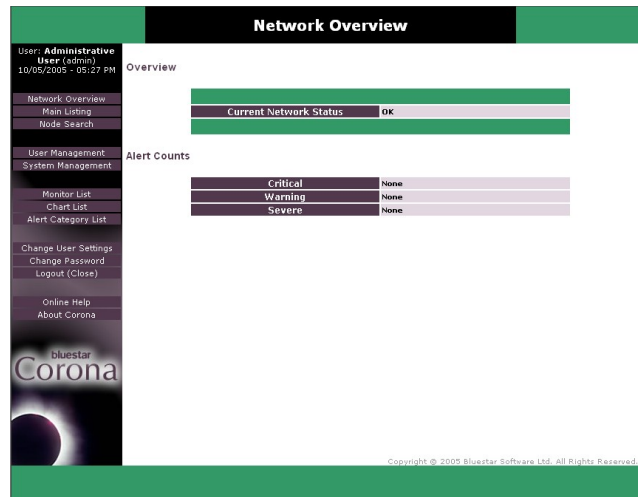
| Description | Type | Result | Details |
|--|--------|----------|-----------------|
| User's "ping" to check the connection to alive | ACTIVE | Disabled | Enable Monitor |
| Check the coreos web service is running on port 9250 | ACTIVE | Not Test | Disable Monitor |

Main Features

Network Overview

The Network Overview page displays a colour-coded summary view of the current system alert status (i.e. Green for no problems, red for critical problems etc). A count of all system alerts is also shown with links to the full alert detail pages.

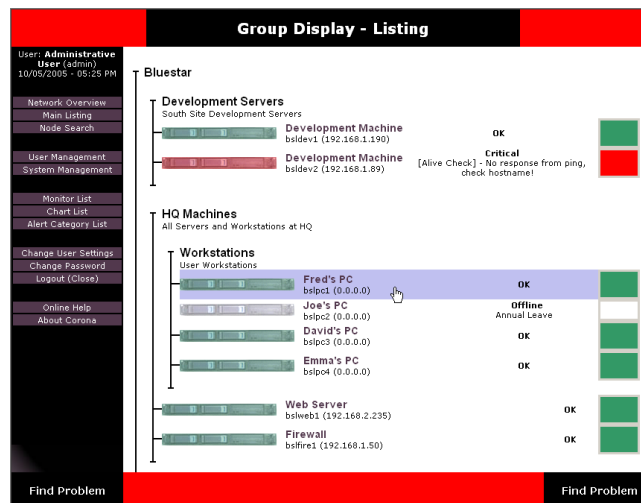
The alert colour code is displayed in the header and footer throughout Corona so users always know the status of the system no matter which page they are currently viewing.



Main Listing

The main listing provides an at-a-glance view of the status of all configured hosts. It shows a graphical representation of the network and host status, along with options allowing access to information regarding the individual hosts.

Hosts can be grouped appropriately and controlled or examined directly from this page. For example hosts can be switched on-line or off-line and monitors and charts can be viewed.



Customisation

Corona provides a very flexible environment where administrative users have complete control over all aspects of the system:

- Alert Categories – number, type and colour-code of alerts.
- Users – permissions, email/SMS/pager details and alert settings.
- Hosts – name, type, grouping, active monitors, statistics and charts.
- Monitors – number, type, alert categories and frequency. Links to external monitors.
- Charts – number, type and frequency. Links to external statistics collection scripts.

